



WINSTAR Display Co.,Ltd.

5F., No.31, Keya Rd., Daya Dist., Taichung City 428, Taiwan
TEL/+886-4-2568 9987 FAX/+886-4-2586 7763 E-mail/Sales@winstar.com.tw

Engineering Change Notice!!!

Affected items:

- WF101FSYAPLNG0#**
- WF101FSYAPLNN0#**
- WF101FSYAPLNT0#**
- WF101GTYAPLNG0#**

Subject of Change!

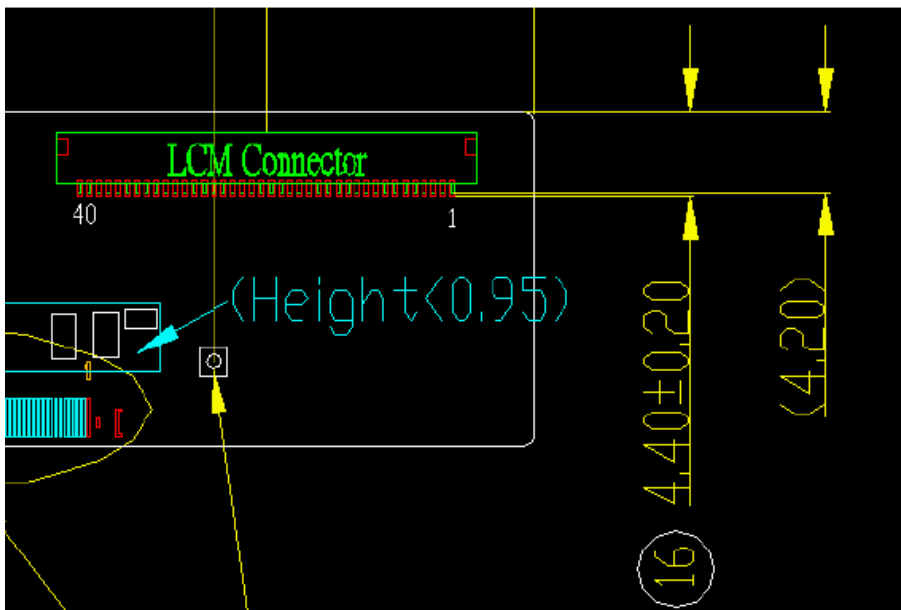
1. TFT panel production factory transfer & Component EOL
2. PCBA add alignment mark & dummy pin

Changes:

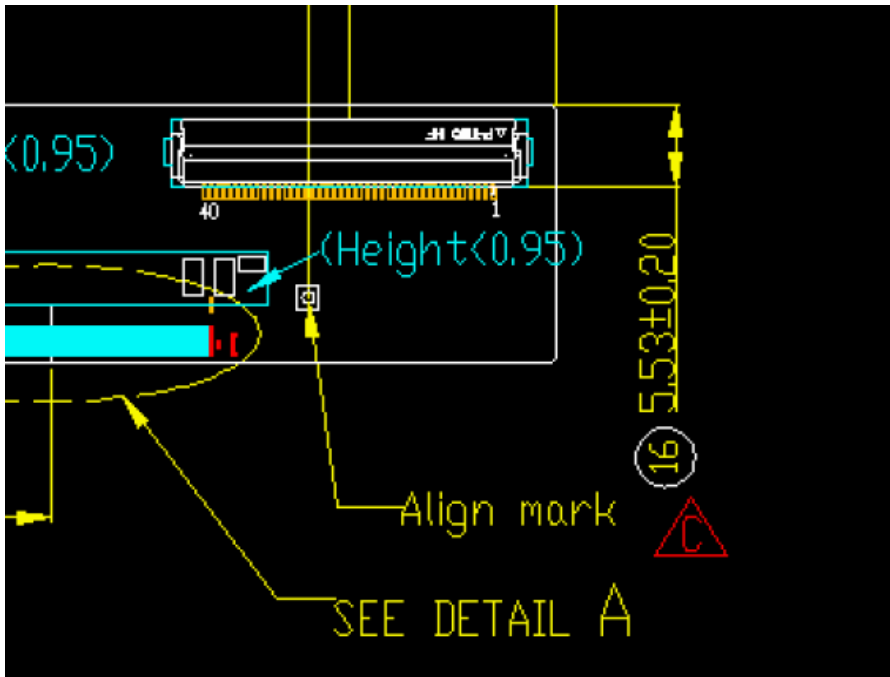
1) PCB Connector

Size will become bigger, and Y-direction displace downward 1.78mm

Before



After

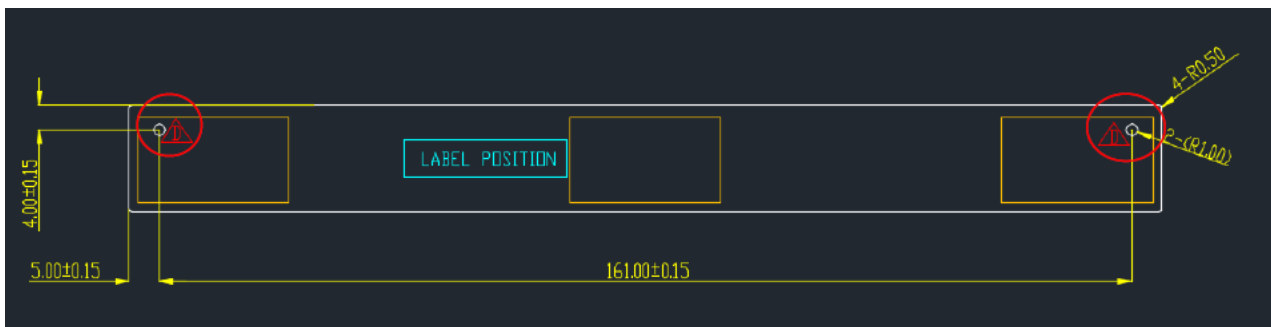


2) PCBA add alignment mark at left & right side for improving process yield.

Before

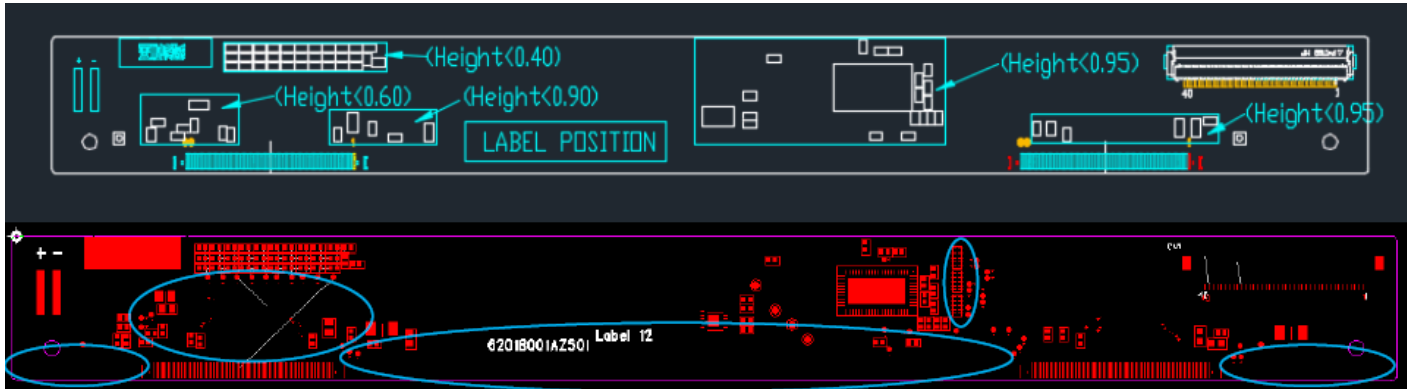


After

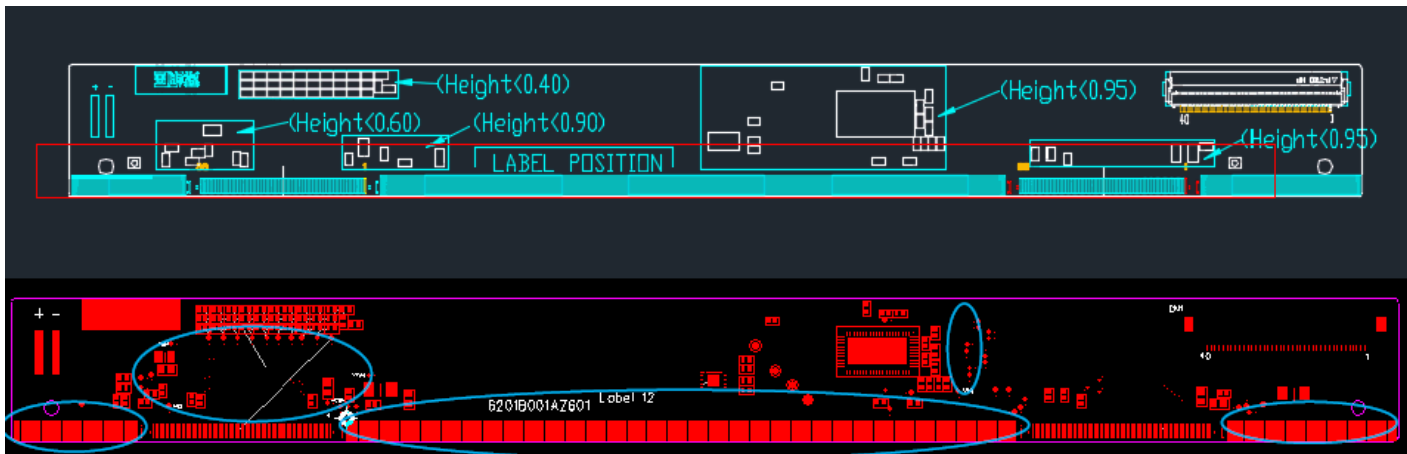


3) PCBA add dummy pin, adjust test pad, remove some no components welding pad, update silk seal for improving process yield.

Before



After



Outcome

There are only look difference between old version & new version!
No function difference between old version & new version!